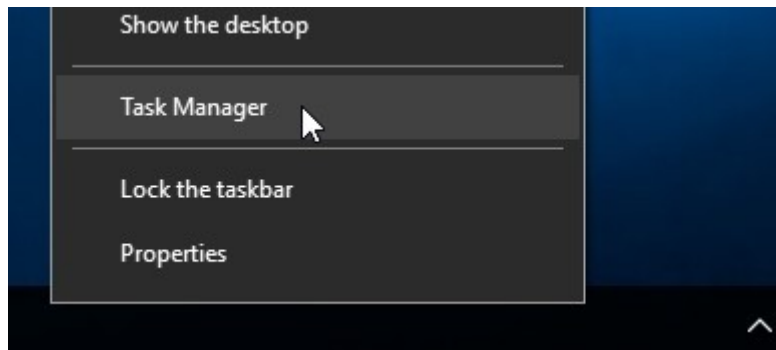


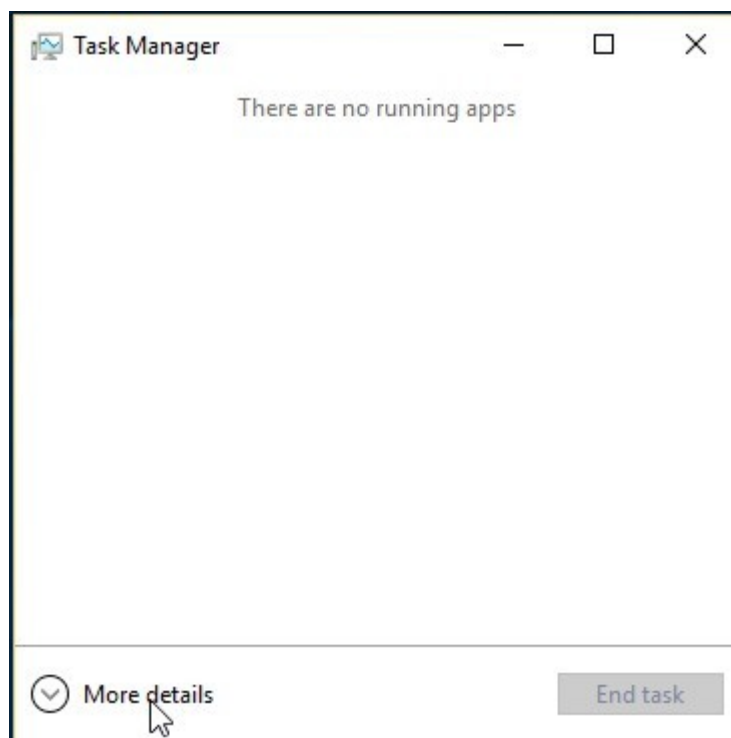
How to run the System File Checker (SFC) as Administrator

If you are being given the message “**You must be an Administrator..**” when attempting to run the System File Checker utility, despite your user account being an Administrator account, then the steps below will show you how to work around this issue.

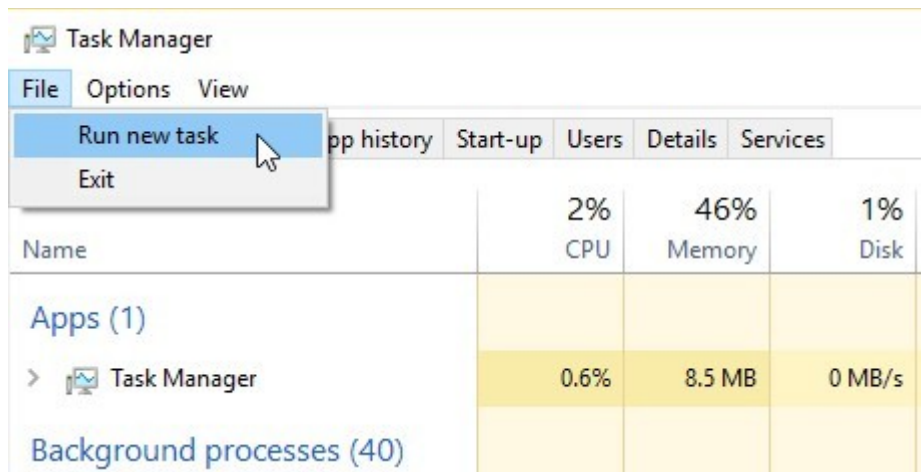
1. Left-click with the mouse on an empty area of the system task bar, then click on **Task Manager** from the list of options shown in the menu that appears.



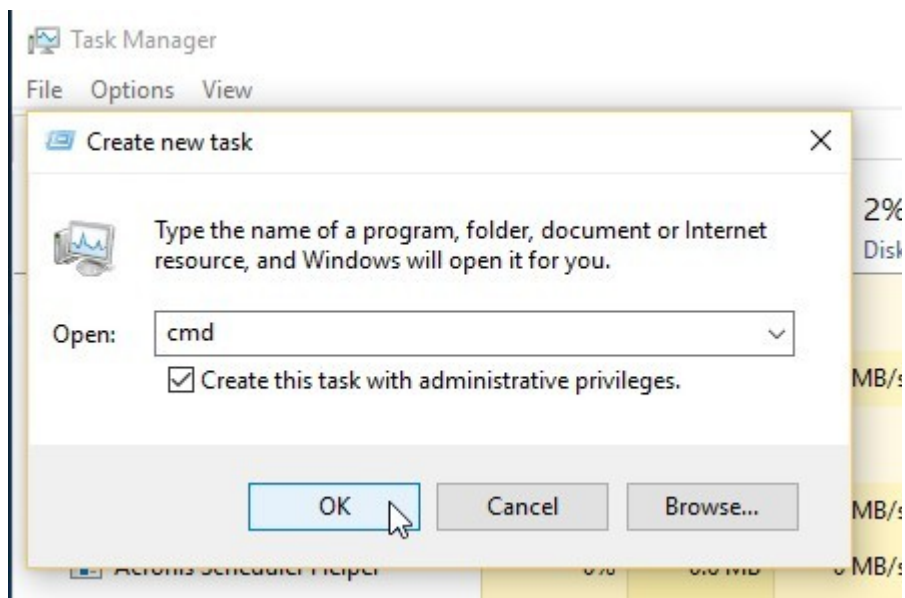
2. If the Task Manager panel shows as below, click on the option to show **More details** at the bottom.



3. In the expanded Task Manager panel, click on the **File** menu entry and then click on the option to **Run new task**.



4. In the **Create new task** panel, type **cmd** in the Open: input box, and ensure that the tick box for **Create this task with administrative privileges** is ticked.



5. An elevated, administrator Command Prompt window will now open. Type the command: **SFC /SCANNOW** and then wait patiently for this to finish. Note: this system scan can take a long time!

