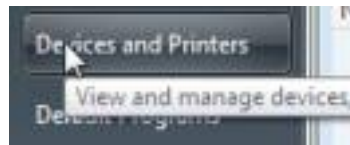


How to test that you can print from Windows 7.

1. On the computer, click on the Start button



2. Click on Devices and Printers

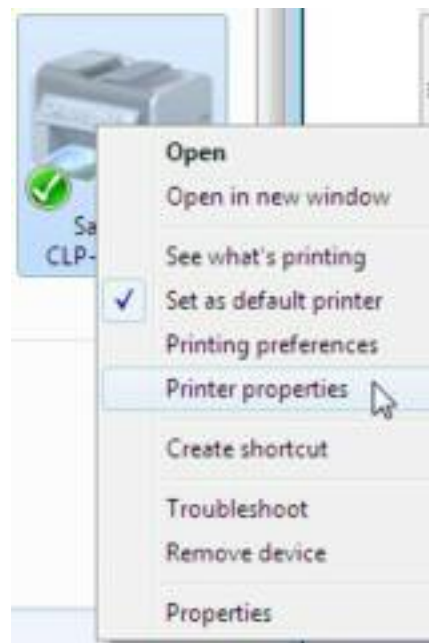


3. Look at the new windows and check that you can see your printer shown in the ones shown.

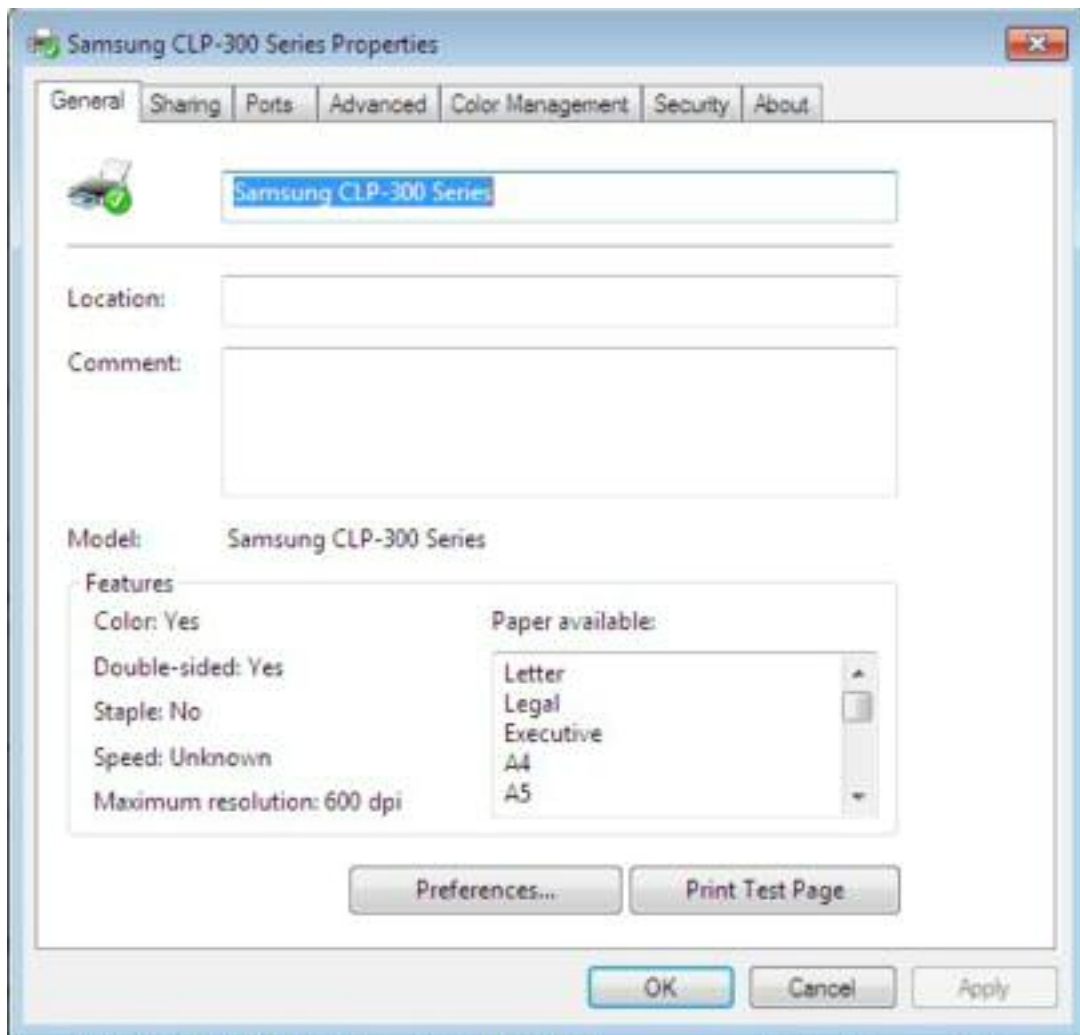


Note: The printer may have a tick mark shown if it is also the default printer set for Windows to use (as shown above for my Samsung CLP-300 Series printer).

4. Right click with your mouse on your printer.



5. Click on Printer properties which will open a further window which should have an option to **Print Test Page**



6. Click on the **Print Test Page** button after making sure that your printer is switched on and ready.
7. You will see a further pop-up box advising as shown below – if all is Ok, then the test page will print on your printer proving that you can print without problem from your computer to the printer.

